

**Count Stations**

- ATR
- Full Coverage
- Classification
- Adjacent
- Termini

**Functional Classification**

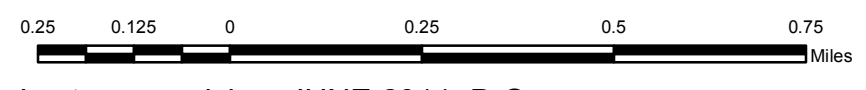
- Rural Interstate
- Rural Principal Arterial
- Rural Minor Arterial
- Rural Major Collector
- Rural Minor Collector
- Urban Interstate
- Urban Freeways & Expressways
- Urban Principal Arterial
- Urban Minor Arterial Street
- Urban Collector Street
- Rural & Urban Local

CS-0000 Functionally Classified Road No.

- Bridge
- Railroad
- Stream
- City/Town
- Airport
- Federal Aid Urbanized Area 2000
- Incorporated Area
- Lake
- State Park
- National Park or Recreation Area
- Defense Facility
- Wildlife Area
- Geological Area
- State, National, or Private Forest



**Traffic Station Counts**  
**MOUNT STERLING,**  
**MONTGOMERY COUNTY**



Last map revision: JUNE 2011 D.O.

Latest traffic count date for each station is indicated on the map in parentheses after the actual traffic count. For the most current traffic count information, please refer to the Counts Database Program (CTS) found on the Division of Planning website.

[www.planning.kytc.ky.gov](http://www.planning.kytc.ky.gov)

Station locations are plotted at segment midpoints where actual mileposts have not been verified in the field.

Kentucky State Plane Coordinate System (NAD-83)